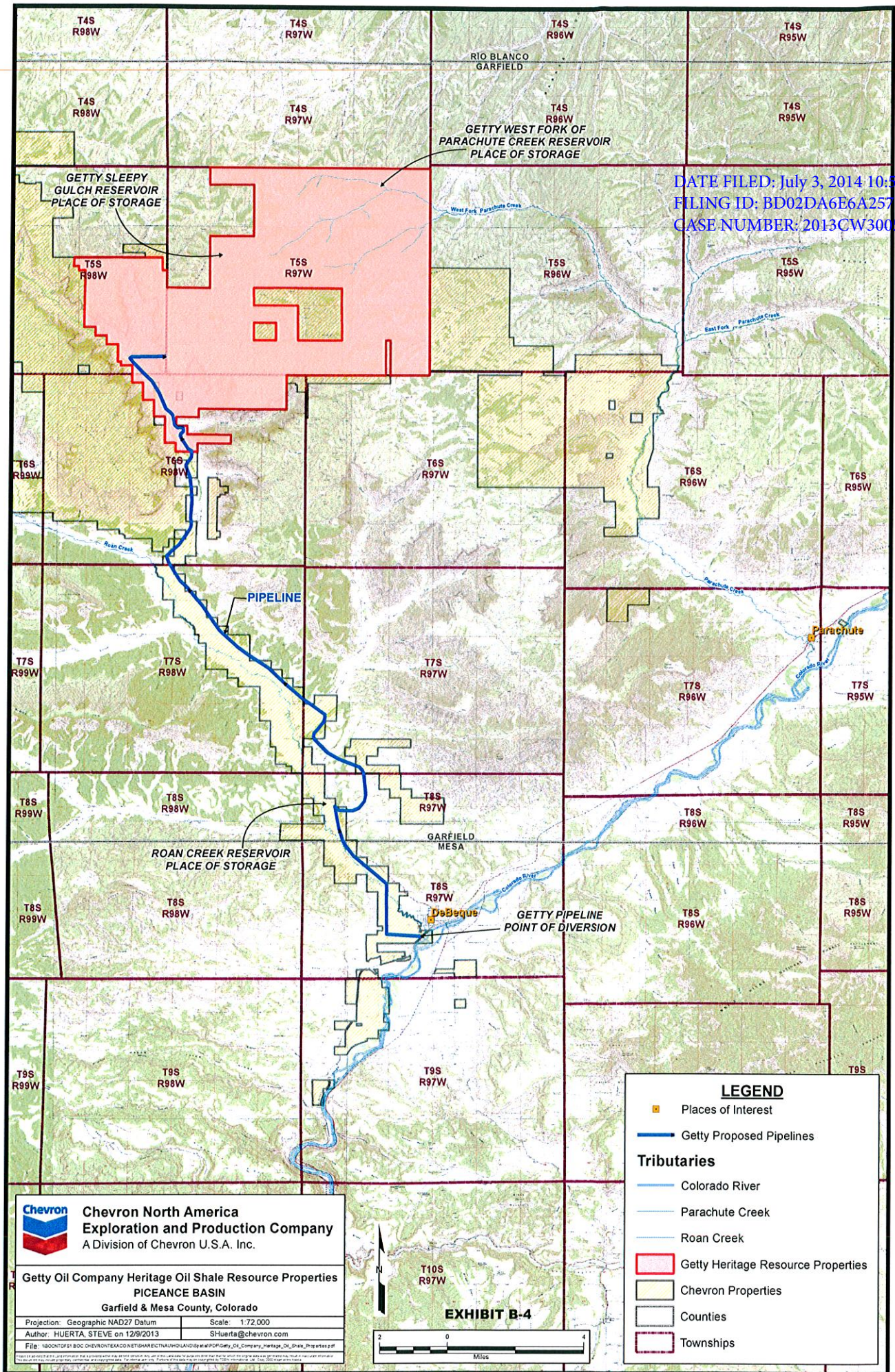


DATE FILED: July 3, 2014 10:50 AM
 FILING ID: BD02DA6E6A257
 CASE NUMBER: 2013CW3005



Chevron Chevron North America
 Exploration and Production Company
 A Division of Chevron U.S.A. Inc.

Getty Oil Company Heritage Oil Shale Resource Properties
 PICEANCE BASIN
 Garfield & Mesa County, Colorado

Projection: Geographic NAD27 Datum Scale: 1:72,000
 Author: HUERTA, STEVE on 12/9/2013 SHuerta@chevron.com

File: \\BOONTOP\S1\BOC-CHEVRON\EXACAD\NET\SHARE\ECT\H\HOLAND\getty\PO\Getty_Oil_Company_Heritage_Oil_Shale_Property.dwg

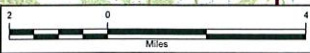


EXHIBIT B-4

LEGEND

- Places of Interest
- Getty Proposed Pipelines

Tributaries

- Colorado River
- Parachute Creek
- Roan Creek

- Getty Heritage Resource Properties
- Chevron Properties
- Counties
- Townships